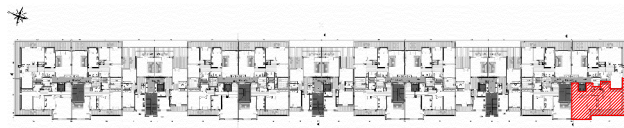


SOCIETE HOTEL PALACE

RESIDENCE "DIAR EL BAHAR"



REPERAGE



Niveau : 2 EME ETAGE

BLOC G

APPARTEMENT (S+2)

G.2.4

S.T.H.O: 117.59m<sup>2</sup>

S.T.V: 138.17m<sup>2</sup>

S.Terr.Couv:28.51m<sup>2</sup>



BLOC G

