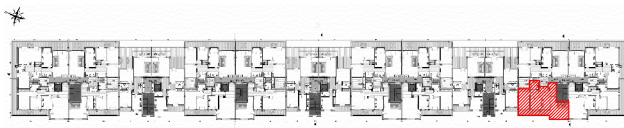


SOCIETE HOTEL PALACE

RESIDENCE "DIAR EL BAHAR"



REPERAGE



Niveau : 2 EME ETAGE

BLOC G

APPARTEMENT (S+2)

G.2.3

S.T.H.O: 108.23m<sup>2</sup>

S.T.V: 127.17m<sup>2</sup>

S.Terr.Couv:12.81m<sup>2</sup>

