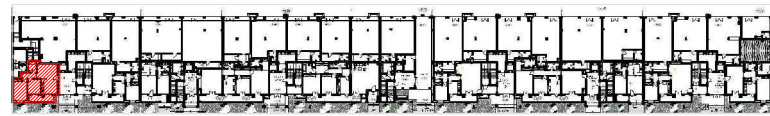


SOCIETE HOTEL PALACE

RESIDENCE "DIAR EL BAHAR"



REPERAGE



Niveau : REZ DE CHAUSSEE

BLOC A

APPARTEMENT (S+2)

A.0.1

S.T.H.O: 76.83m<sup>2</sup>

S.T.V: 90.28m<sup>2</sup>

S.Terr.Couv:9.60m<sup>2</sup>

S.Jardin:34.95m<sup>2</sup>

